

The Natural Angle

VOLUME 18: ISSUE 4

THIS NEWSLETTER PUBLISHED FOR MONETTA FARRIER SPECIALTIES, INC.

What Happens When Hoof Care is Neglected

In July of 2020, we had a horse come in the FootPro Shop that proved to be a good example of what can happen when hoof care is not done on a regular schedule. Dave Farley, CF APF-I came to the shop to talk about the evaluation process he follows before shoeing his horses. It was obvious the feet had not been trimmed for some time, indicating no farrier had been scheduled to keep them in reasonable shape.

Beyond the excessive growth, Dave could see immediately she had a problem with her right front that needed to be dealt with. The owner told Dave the horse had just popped an abscess a few days before coming to the shop. In examining the size of the break in the hoof wall, it seemed likely a considerable amount of wall undermined as the abscess worked its way up the wall. There were also indications the sole had been compromised, as well.

Dave was able to get the foot trimmed, treated with FootPro CS+ and a shoe applied, despite the discomfort the abscess caused. He recommended the owners ask their vet how to treat the open wound and to make sure to follow



July 2020 - Annabelle before trim.



July 2020 - sole area. Note indications of abscess in toe area.



July 2020 - shod with Diamond Tracker Shoe.

up with a local farrier. The abscess appeared to have been ongoing for some time to cause this amount of wall separation and the poor condition of the hooves indicated she had not had any recent farrier work done either. The question was whether that neglect would change.

Continued on page 2

Continued from page 1

Fast forward to March of 2021. We contacted the owners to see if they would like to bring the horse back to the FootPro Shop to be shod by Hank Chisholm, CJF. We had no idea that she had not been done since July of 2020. You can imagine our surprise- and Hank's- when she walked into the shop. You can see from the images that the wall had grown considerably in the months since she was in the shop but she had not received any farrier care and a large area of the lateral wall of the right foot was broken off. What was still there was undermined and significantly detached. The sole was also undermined and had cracks and separation that were going to require extra care. Hank wasn't rattled, he just knew this was going to be a tedious shoeing job that was going to take some time to get things back on track.

We had no idea that she had not been [shod] since July of 2020.

Have a look at the images from 2020 when the abscess first caused damage to the wall and the work Hank went through to get this horse back on a good path.

This may be a good article to share with your clients that don't stick to a good schedule. Perhaps they'll understand why it's important for the health of the horse to work with you to get a reasonable schedule set up.



March 2021 - missing wall and lateral Toe quarter undermined.



March 2021 - Hank starts to investigate damaged wall.



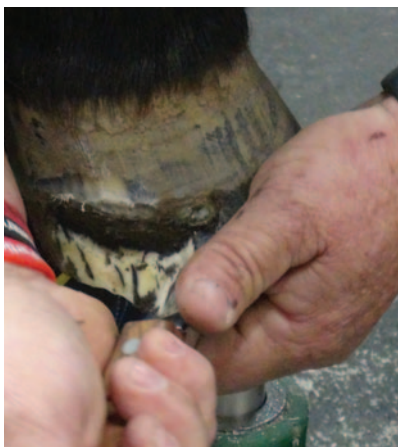
March 2021 - sole pared and some damaged wall removed to begin trim.



March 2021 - rasping outer wall to get indication of true shape.

Continued on page 3

Continued from page 2



March 2021 - additional wall resection and clean up, removing anything not attached or healthy.



March 2021 - using Dremel tool to get final clean up at juncture of wall and laminae.

March 2021 - using heat gun to dry area to be patched after shoe has been applied.

Continued on page 4



BELLOTA
HARD WORK INSPIRED

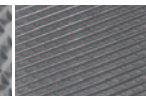
THE BEST PERFORMING RASPS IN THE INDUSTRY

The Bellota Top Level is 12% wider (2" wide) and 10% thinner than regular rasps, for perfect leveling balance and control. The 8 tooth rasp side pattern has an aggressive cut and an intermediate file side, similar to the Top Sharp.



RASP SIDE

FILE SIDE



WATCH VIDEOS OF THE BELLOTA TOP LEVEL IN ACTION ON YOUTUBE @FARRIERPRODUCTS.



LIBERTY **Cu**
A NAIL EVOLUTION

Liberty Combo Slim Series

Combo nails are a modification of the City or Slim nail. The heads are slightly larger but yet the shank is still similar to the City or Slim. They are often used for resetting when nail holes have enlarged or with shoes that have a wide crease.

4 COMBO SLIM (48.5MM) ✓
5 COMBO SLIM (52.5MM) ✓
6 COMBO SLIM (54MM) ✓

View the full line of Liberty nails at farrierproducts.com

Continued from page 3



March 2021 - applying first layer of Adhere.



March 2021 - application of second and third layer.



Diamond
Diamond Classic Heeled

Provides heel traction in rugged environments and sport applications. Heel caulks are forged, not welded. The leading edge of the caulk is forged in the horse's line of travel for better traction and stability.

SIZES 000, 00, 0, 1 AND 2

Better Than ever

HORSESHOES + TOOLS + HOOFCARE



March 2021 - Vettec Equi-Pak applied to provide support and protection.



March 2021 - Vettec Adhere dressed before final nails are driven.

Continued on page 5

Continued from page 4



March 2021 - nails driven through material, ready to clinch.



March 2021 - after clinching, note the ledge of material at top to help with bond.



By late April 2021 hoof is growing down and a much smaller area requires the Adhere patch.



In June 2021 reset, very little patch needed to fill void in toe quarter.

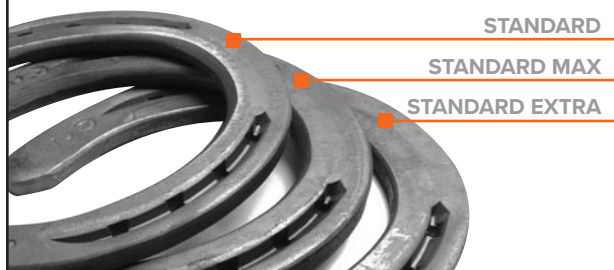
We had Bobby Menker, CJF APF-I come to the shop for two follow-up shoeings on this horse after Hank got her on track for recovery. The hoof is almost completely grown back and in a cycle or two, she should be as good as new.

Let's all hope the owners learned how important it is to keep a regular schedule for her hoof care, whether it's just to be trimmed or to be shod.

The work that Dave, Hank and Bobby did is documented in video footage that you can see on our YouTube channel, [YouTube.com/farrierproducts](https://www.youtube.com/farrierproducts). ■

When your work demands versatility, choose the Kerckhaert Standard Max

The Kerckhaert Standard Max is the answer to increased demand from farriers for a basic shoe with additional thickness. The Standard Max complements the Standard and Standard Extra. It is slightly wider than the Standard, but in a 3/8" thickness. The Standard series is a solid group of shoes that fit the needs of many pleasure, ranch and trail horses.



NEW PRODUCT SPOTLIGHT

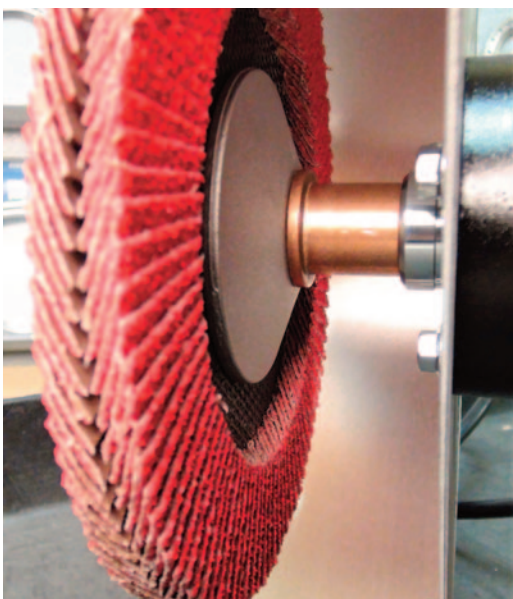
FOOTPRO DOUBLE SIDED BENCH GRINDER DISC

If you do a lot of heel check grinds this is the attachment for you. It is also useful for notching pads for clips, beveling the inside web of shoes and touch up of clips. It has a 40-grit Ceramic abrasive that does an excellent and efficient job and is long lasting.

A couple quick notes important to mounting the disc properly. It has a 5/8" arbor so it fits perfectly on grinder shafts of 5/8". However, you need a spacer to keep it far enough from the housing to be able to tighten. That spacer will be 3/4-1" long for most grinders. Most importantly, it is directional, meaning you can only mount it properly going in one direction. There is an arrow on the label indicating the direction and it should match the direction your grinder shaft is turning. Be sure you check this before using it. If it is mounted in the wrong direction the disc will not work and will be damaged very quickly.



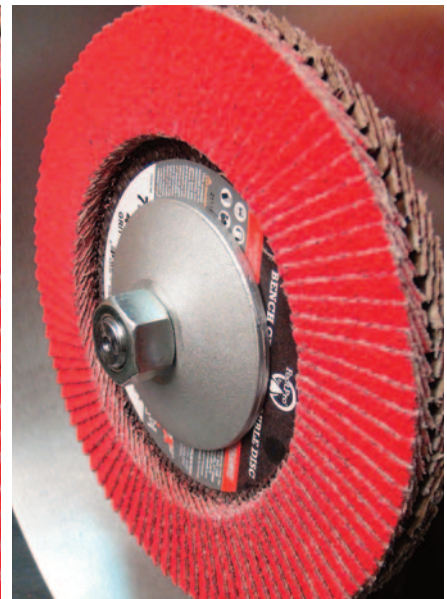
You will wonder why it took so long for someone to bring the new FootPro Double Sided Bench Grinder Disc to the market. Check it out!



3/4"x1" spacer needed.



Mount in right direction.



Ready to work.

Spend Less, Get 30% More

The 210cc Vettec cartridges hold 30% more material and cost less than previous cartridges, giving you more value for your hard-earned money.



Vettec Sole-Guard is Completely Unique.

Sole-Guard is a black liquid urethane that can be used in a variety of applications to produce an extremely durable pad on shod and unshod equine feet. It sets in 30 seconds, bonds to the sole and frog and can be used as a thin protective pad, or a thicker, supportive pad. Sole-Guard is completely unique to Vettec.



Scan Code to
Watch Vettec
Product Videos

TOOL TIPS

Hoofjack Mini Cradle with Standard Post

FPD IS ALWAYS ON THE LOOKOUT FOR IDEAS THAT CAN IMPROVE THE USE OF EQUIPMENT AND PRODUCTS WE'RE INVOLVED WITH.

A good example is the new Hoofjack Mini Cradle with a Standard Length Post (11"), an ideal fit for the Standard Base. The difference in the cradle size can help you avoid damaging the webbing when working on the foot, especially when rasping or nailing. For smaller feet, perhaps size 1 and down, the foot will be more stable also and not slide or move as much.

This cradle and post will also fit in your mini or medium base but be aware it may be a little more unstable in the shorter bases. We put this new product into play in the FootPro Shop and could see the benefits right away. ■



FOOT SITS UP IN CRADLE



FOOT IS EASILY NIPPED AND DOESN'T SLIDE



WHEN RASPING, FOOT IS ABOVE CRADLE WEBBING

THE NATURAL ANGLE is published to provide you with new and useful information about the industry. It is published through a cooperative effort of FPD, Kerckhaert Horseshoes, Liberty Horseshoe Nails, Bellota, Bloom Forge, Vettec and your supplier.

Articles in this publication are the property of *The Natural Angle* and cannot be reprinted without express permission. For information concerning reprints, please contact Dan Burke, FPD, P.O. Box 1328, Shelbyville, KY 40066 or Email: fpd@farrierproducts.com.

If you have questions, comments or ideas concerning the articles published in the *Natural Angle*, please contact your distributor. We welcome your input. *The Natural Angle* is designed and edited by Graphic Response. ■

Find These Quality Products at Monetta Farrier Specialties

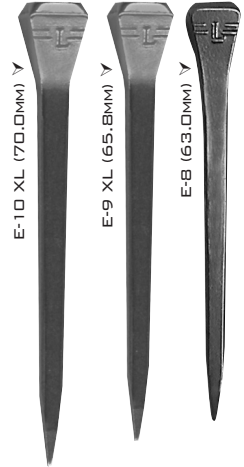
Bellota RAZOR+ Rasp (14")

The rasp side of the Bellota RAZOR+ offers a most aggressive cut, with a larger tooth design when compared to other Bellota rasps. In addition, special steel characteristics combined for the longest durability.



Liberty E-Head Nails

E-Slim are European style nails. These fit well in shoes like the Kerckhaert DF and SSP series that were made first for the European market. Used most often in the Hunter and Jumper discipline. Some farriers prefer to punch their hand made shoes for E-heads because of the symmetrical nature of the nail. There is also a feeling that an E-head nail has more strength because the shank comes out of the center of the head, with slightly more mass.



Outfitting Southeastern Farriers for Over 30 years

GREAT SERVICE AND QUALITY FARRIER SUPPLIES ARE OUR PRIORITY

MONETTA
FARRIER SPECIALTIES, INC.

MONETTA
FARRIER @TRYON

Aiken, SC
803.685.5101

Columbus, NC
828.894.0280

www.monettafarrier.com

Kerckhaert DF Select

Kerckhaert designed this hind pattern shoe for the hunter jumper market, heels are elongated and tapered with the widest part of the shoe moved forward. Available in 8mm and 10mm thickness. Punched for E-head nails.



Return Service Requested

Monetta Farrier Specialties, Inc.
1755 Park Ave SE
Aiken, SC 29801

FIRST CLASS
U.S. POSTAGE
PAID
HAGERSTOWN, MD 21740
PERMIT NO. 184