

NEWS FOR FARRIERS

New Bellota Items Available

Look for new Bellota items to be available this year from your FPD dealer.

Available now are a Bellota 12" Nail Cutter and the Bellota Stainless Steel Brush; a lightweight stainless steel brush that can be used for the hoof or for cleaning shoes on resets.

We have also introduced the Bellota Dutch Pattern 2.2 lb. Sledge with a short handle in response to demand for reasonably priced Blacksmithing tools. Check with your FPD dealer to add these quality items to your tool box.



JUST A REMINDER

Kerckhaert Chameleon Rasp Handle



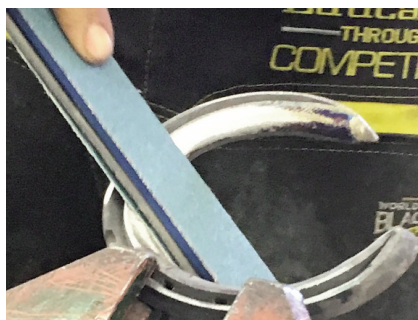
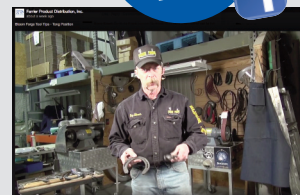
The Kerckhaert Chameleon rasp handle is made with a more flexible, less slippery material than other brands and is much more competitively priced. Try one today!

Bloom Forge Tool Tips

New educational videos with Roy Bloom, APF CJF are available now on FPD's YouTube Channel. Be sure to check out

"Fitting Tongs" and "Tong Position" with Roy. Subscribe to FPD's YouTube channel at www.youtube.com/FarrierProducts

AS SEEN
ON FPD'S
FACEBOOK
PAGE



"It's like a grinder in your hands!" - Spencer Braswell, CJF

FootPro Sandbox Half-Round Tool – New Length Available

In response to feedback from forging competitors, Justin Frye (creator and designer of the Sandbox Tool) has now added a FootPro Sandbox Tool in an 18" length. This model will be labeled 18" - Long while the first model introduced is labeled 15" – Regular. This information will be clearly marked on the label. There will also be belts marked with a 15" and 18" designation available for use with the Half-Rounds. Both 80 and 100 grit belts are available for use with the 18" model. Check with your FPD dealer for the FootPro Sandbox Half-Round tools, now available in both 15" and 18" lengths.

ROCKER TOE MODIFICATION

You may find that a rolled toe modification or shoes that already have some enhancement for breakover don't provide enough improvement for the foot movement. A "rocker toe" modification may be a better solution for moving the point of breakover back further, without having to move the entire shoe back. The steps in the modification of this Kerckhaert Standard Extra show the simple process to create the rocker toe. Of course you have to consider how to adjust the toe of the foot to accommodate the rocker- usually an adjustment you can do with the rasp, but important to match to your shoe modification.



View this article on FPD's Field Guide for Farriers » www.farrierproducts.com/fieldguide/western

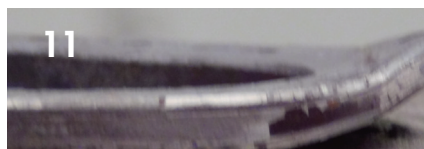
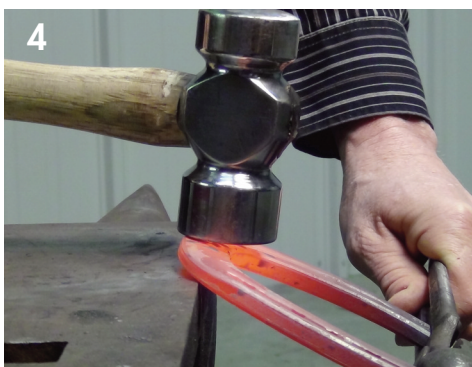


PHOTO 1: Place shoe on edge of anvil at desired location for breakover point.

PHOTOS 2, 3 AND 4: Set corners of rocker.

PHOTOS 5, 6 AND 7: Now finalize rocker toe section and angle.

PHOTO 8: You can see distinct line where rocker toe break over point is set.

PHOTO 9: Flatten shoe.

PHOTOS 10 AND 11: Rocker toe is set and easy to see in these images.



Find the best shoes for all disciplines on FPD's Field Guide for Farriers at www.farrierproducts.com/fieldguide.

Connect with FPD
and Join the Conversation



facebook.com/farrierproductdistribution • youtube.com/farrierproducts • instagram.com/fpdinc • farrierproducts.com/blog